

INSTALATION

Battery Aplus UPS PlusIII-1KLRB 36V

Intelligent Battery Door Design

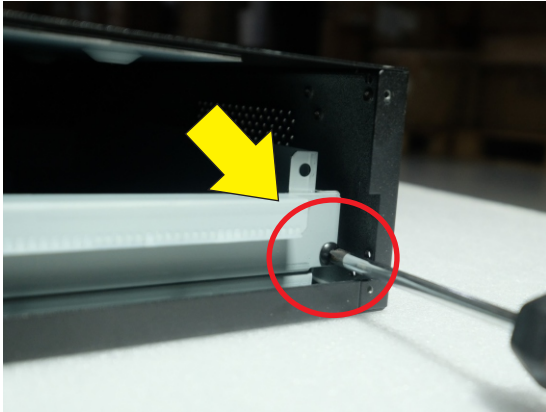
1. Lepas baut pengikat cover case



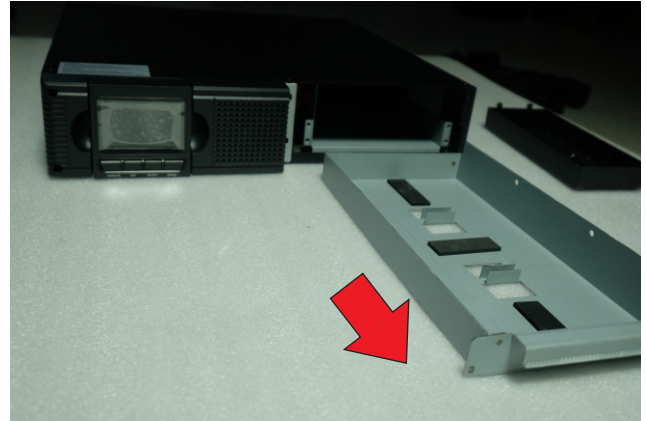
2. Lepas cover case



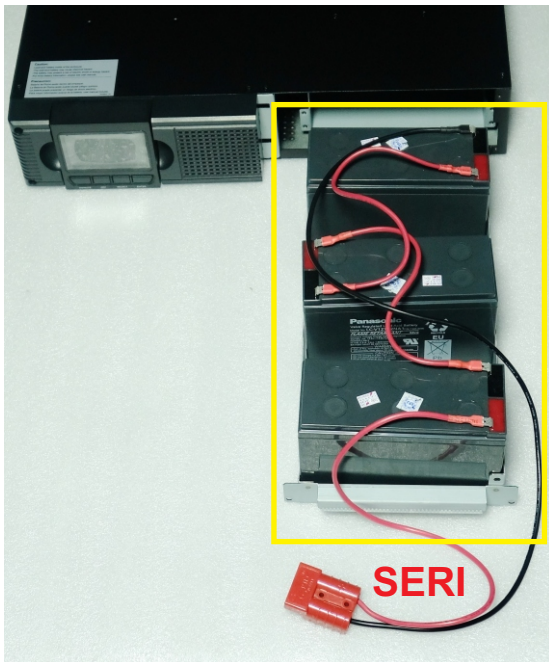
3. Lepas baut pengikat rel battery



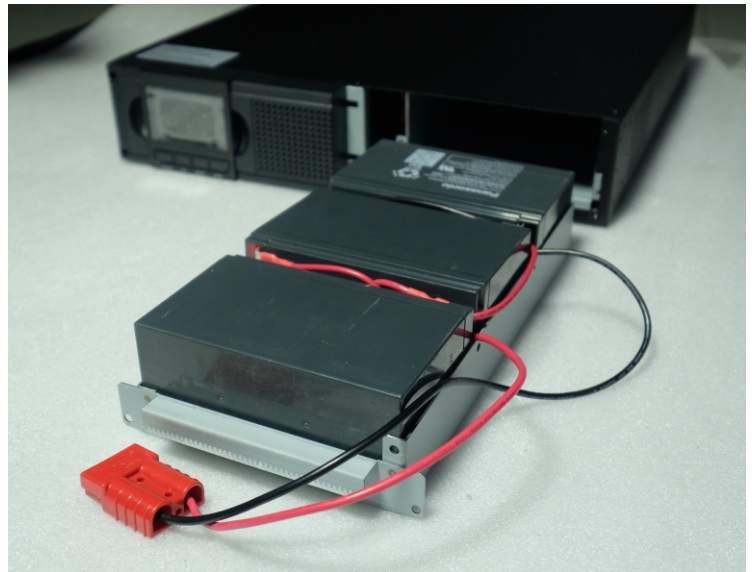
4. Tarik rel battery ke arah depan



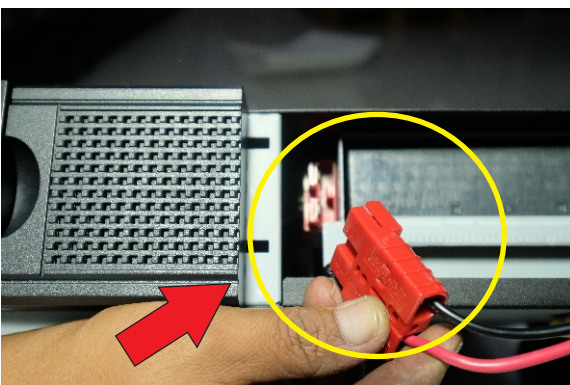
5. Rangkai battery secara "SERI"



6. Posisikan battery seperti pada gambar



7. Pasang kabel battery pada socket tersedia



8. Pasang socket PDU & MBS pada output UPS

