

RG-RAP1200(P)

Reyee Wi-Fi 5 1267 Mbps Wall-mounted Access Point

DATASHEET



Highlights

- Dual-radio performance, full gigabit wall-mounted access point
- Better experience with MU-MIMO under 802.11ac Wave2
- Multi-service supported with full gigabit ports
- Easy installation, worldwide compatible
- One click to optimize, get better Wi-Fi experience

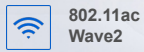
Highlight Features

Dual-Radio Performance, Gigabit Wall-mounted Access Point

Interface

Application

1267 Mbps



802.11ac Wave2



PoE Pass Through



2x2 MU-MIMO



Reye Mesh Technology



Free Cloud Management

Dual-Radio Performance, Gigabit Wall-mounted Access Point

Interface

Application



Better Experience with MU-MIMO under 802.11ac Wave2

Dual Band

802.11ac Wave2

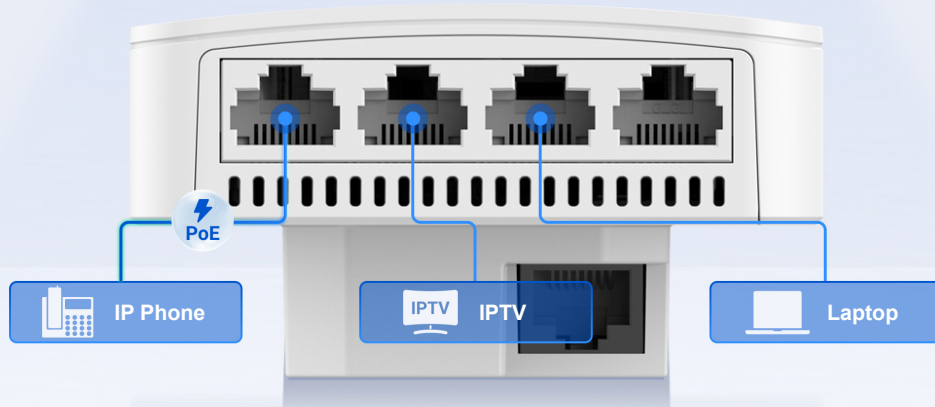
1267 Mbps

11n



Highlight Features

Multi-Service Supported with Full Gigabit Ports



Easy Installation, Worldwide Compatible



One Click to Optimize, Get Better Wi-Fi Experience

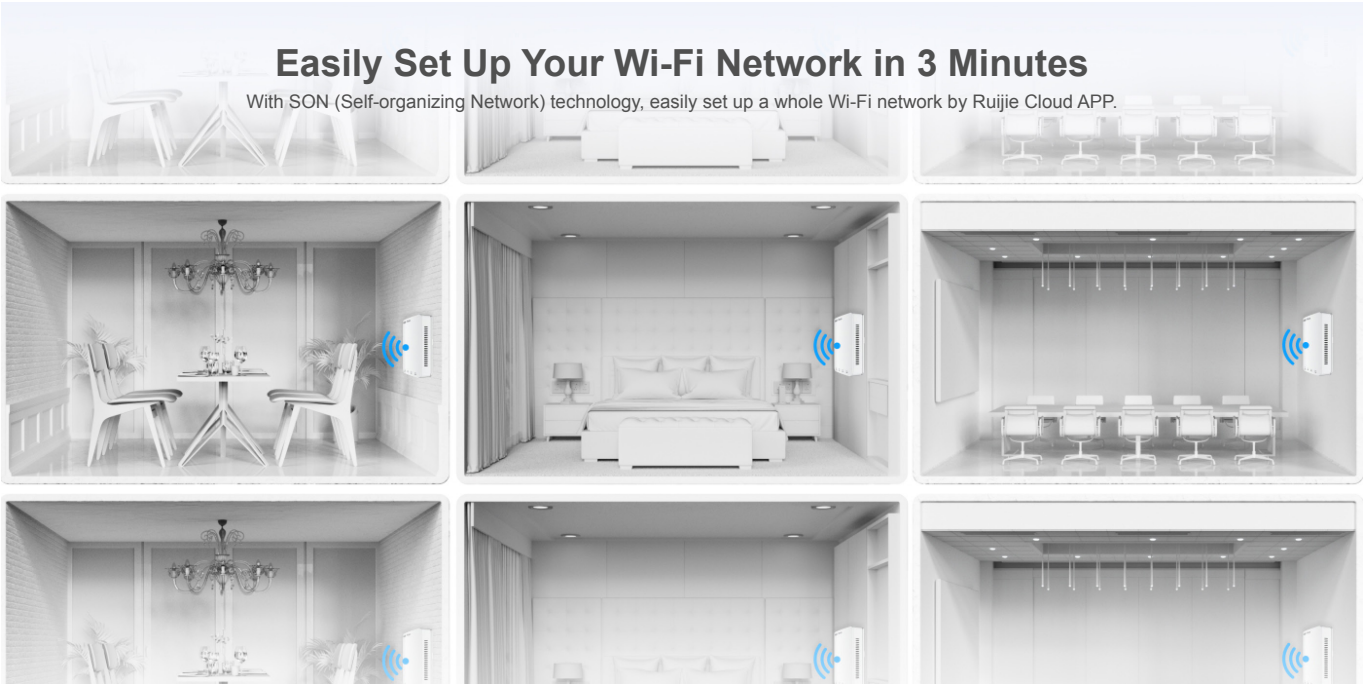
The WIO (Wi-Fi Intelligent Optimization) technology allows you to optimize wireless network by one click.



Highlight Features

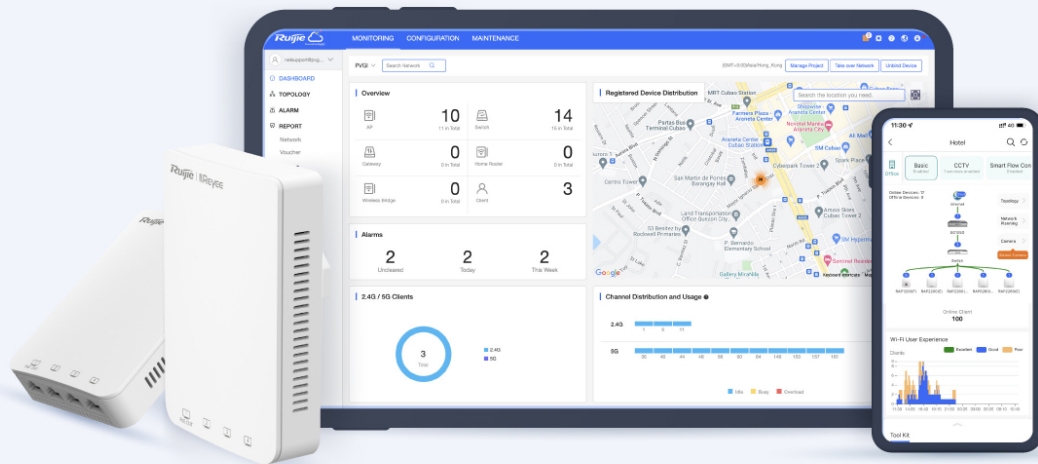
Easily Set Up Your Wi-Fi Network in 3 Minutes

With SON (Self-organizing Network) technology, easily set up a whole Wi-Fi network by Ruijie Cloud APP.



Cloud, Make Your Business Easy

- Self-organizing Network
- Centralized Network Management
- Scenario Based Configuration
- Cloud Portal Authentication
- Remote Monitoring and Maintenance



Specifications

Hardware Specifications

| Model | RG-RAP1200(P) | RG-RAP1200(F) |
|------------------------|---|--|
| Radio | Dual-stream Dual-band | |
| Protocol | Concurrent 802.11ac Wave2, Wave1, 802.11a/b/g/n | |
| Operating Bands | 802.11b/g/n: 2.4 GHz ~ 2.4835 GHz 802.11a/n/ac: 5 GHz: 5.150 GHz ~ 5.350 GHz, 5.725 GHz ~ 5.850 GHz. (Note:The operating bands vary according to different countries) | |
| Antenna | Built-in Antenna (2.4 GHz: 2 dBi, 5 GHz: 2 dBi) | |
| Spatial Streams | 2.4 GHz: 2x2 MIMO 5 GHz: 2x2 MIMO | |
| Max Throughput | 2.4 GHz: up to 400 Mbps 5 GHz: up to 867 Mbps Access rate per AP: 1.267 Gbps | |
| Modulation | OFDM: BPSK@6/9 Mbps, QPSK@12/18 Mbps, 16-QAM@24 Mbps, 64-QAM@48/54 Mbps DSSS: DBPSK@1 Mbps, DQPSK@2 Mbps, and CCK@5.5/11 Mbps MIMO-OFDM: BPSK, QPSK, 16QAM, 64QAM and 256QAM | |
| Receive Sensitivity | 11b: -91 dBm(1 Mbps), -88 dBm(5 Mbps), -85 dBm(11 Mbps) 11a/g: -89 dBm(6 Mbps), -80 dBm(24 Mbps), -76 dBm(36 Mbps), -71 dBm(54 Mbps) 11n: -83 dBm@MCS0, -65 dBm@MCS7, -83 dBm@MCS8, -65 dBm@MCS15 11ac HT20: -83 dBm(MCS0), -57 dBm(MCS9) 11ac HT40: -79 dBm(MCS0), -57 dBm(MCS9) 11ac HT80: -76 dBm(MCS0), -51 dBm(MCS9) | |
| Maximum Transmit Power | CE EIRP: ≤19 dBm (2.4 GHz) ≤18 dBm (5 GHz) country-specific restrictions apply | |
| Adjustable Power | 1 dBm | |
| Dimensions | 126 mm × 86 mm × 50 mm | 86 mm × 86 mm × 29.3 mm |
| Weight | 0.24 kg | 0.05 kg |
| Service Ports | Front: 4 10/100/1000Base-T Ports, LAN1 supports IEEE.802.3af PoE OUT Rear: 1 10/100/1000Base-T (PoE in) | Front: 1 10/100Base-T Ports Rear: 1 10/100Base-T (PoE in) |
| LED Indicator | 1 LED indicator | |

Specifications

Hardware Specifications

| Model | RG-RAP1200(P) | RG-RAP1200(F) |
|--------------------|--|---------------|
| Power Supply | Support PoE (802.3af/at) | |
| Power Consumption | ≤ 8W | |
| Environment | Operating temperature: 0°C ~ 40°C | |
| | Storage temperature: -40°C ~ 70°C | |
| | Operating humidity: 0% ~ 100%(non-condensing) | |
| | Storage humidity: 0% ~ 100%(non-condensing) | |
| Installation | Wall plate installation | |
| Safety Standard | GB4943, IEC 62368-1 | |
| EMC Standard | GB9254, EN301 489, EN50155, EN50121, EN55032, EN61000, EN55035 | |
| Vibration Standard | IEC61373 | |
| Radio Standard | SRRC certification, EN300 328, EN301 893 | |
| MTBF | > 250000H | |

Software Features

| | | |
|----------------|--|--------------------------------|
| Operating Mode | AP mode and routing mode | |
| WLAN | Maximum number of clients: 110 | Maximum number of clients: 110 |
| | Recommended Clients: 80 | Recommended Clients: 40 |
| | Support SSID hiding Configuring the authentication mode, encryption mechanism, and VLAN attributes for each SSID | |
| | SSID-based and radio-based STA limit | |
| | Support Layer 2 user isolation | |
| Roaming | Support Layer 2 and Layer 3 roaming | |
| Security | Support PSK authentication | |
| | Support static blacklist and whitelist | |
| | Support WPA (TKIP), WPA2 (AES), and WPA-PSK data encryption | |

Specifications

Hardware

| Model | RG-RAP1200(P) | RG-RAP1200(F) |
|----------------------------|---|---------------|
| Routing | Support static IP address, DHCP, PPPoE Dial Up | |
| Management and maintenance | Support unified networking of all network equipment Support local or remote management with Ruijie Cloud app Support local management with web Support remote management with Ruijie Cloud platform | |

Package Contents

| Device | RG-RAP1200(P) | RG-RAP1200(F) |
|-------------------------------|-------------------------|-------------------------|
| Mounting Screw | 2 | 2 |
| Quick Start Guide | 1 | 1 |
| Warranty Card | 1 | 1 |
| Package Weight | 0.31 kg | 0.19 kg |
| Package Dimension (w x d x h) | 150 mm x 110 mm x 65 mm | 128 mm x 116 mm x 50 mm |

Ruijie | 睿 Rcycc

 Redefine your easy network



Ruijie Networks Co., Ltd
Floor 11, East Wing, Zhongyipengao Plaza,
No.29 Fuxing Road, Haidian District, Beijing China
Website: <https://www.ruijienetworks.com>